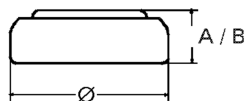


Data Sheet

Type Number 20379
Designation IEC SR521SW (SR 63)
System Silver oxide / Zinc /
 NaOH - Electrolyte



Nominal Voltage 1,55 V
Typical Capacity C 16 mAh
 Load 68,1 kOhm, at 20°C down to 1.2 V

Weight (approx.) 0,23 g
Volume 0,06 ccm
Coding..... Date of Manufacturing
 Month / Year

Temperature Ranges min max.
 Storage -10°C 65°C
 Discharge -10°C 65°C

Dimensions min max.
 Diameter (Ø)..... 5,7 5,8
 Height A/(B) 2,0 2,15

Segment Watch

Typical Capacities (at 20 °C)

Discharge Type	Load	End Voltage: 1.2 V
Continuous 24h/d,7d/w Current [µA]:	68100 Ω 23	Time: 697 h Capacity [mAh]: 16 Energy [mWh]: 25