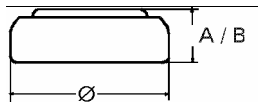


## Data Sheet

**Type Number** ..... 20373  
**Designation IEC** ..... SR 916 SW  
**System** ..... Silver oxide / Zinc / NaOH



**Nominal Voltage** ..... 1,55 V  
**Typical Capacity C** ..... 30 mAh  
 Load 30 kOhm, at 20°C down to 1.2 V

**Weight (approx.)** ..... 0,5 g  
**Volume** ..... 0,12 ccm  
**Coding**..... Date of Manufacturing Month/Year

**Temperature Ranges** min max.  
 Storage ..... -10°C 60°C  
 Discharge ..... -10°C 60°C

**Dimensions** min max.  
 Diameter (Ø)..... 9,35 9,5  
 Height (A/B) ..... 1,47 1,65

**Segment** ..... Watch

**Main Applications** ..... Watch  
 Photo  
 Electronic

### Typical Capacities (at 20°C)

Discharge Type	Load	End Voltage:	1.2 V
Continuous 24h/d,7d/	30000 Ω	Time:	519 h