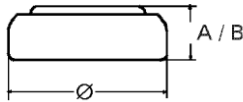


## Data Sheet

**Type Number** ..... 20317  
**Designation IEC** ..... SR 516 SW  
**System** ..... Silver oxide / Zinc / NaOH



**Nominal Voltage** ..... 1,55 V  
**Typical Capacity C** ..... 10,5 mAh  
 Load 68 kOhm, at 20°C down to 1.2 V

**Weight (approx.)** ..... 0,18 g  
**Volume** ..... 0,04 ccm  
**Coding**..... Date of Manufacturing  
 Month / Year

**Temperature Ranges**

	min	max.
Storage .....	-10°C	60°C
Discharge .....	-10°C	60°C

**Dimensions**

	min	max.
Diameter (Ø).....	5,65	5,8
Height (A/B) .....	1,47	1,65

**Segment** ..... Watch

**Main Applications** ..... Watch  
 Electronic

**Typical Capacities (at 20°C)**

Discharge Type	Load	End Voltage:	1.2 V
Continuous 24h/d,7d/w	121000 Ω	Time:	412 h